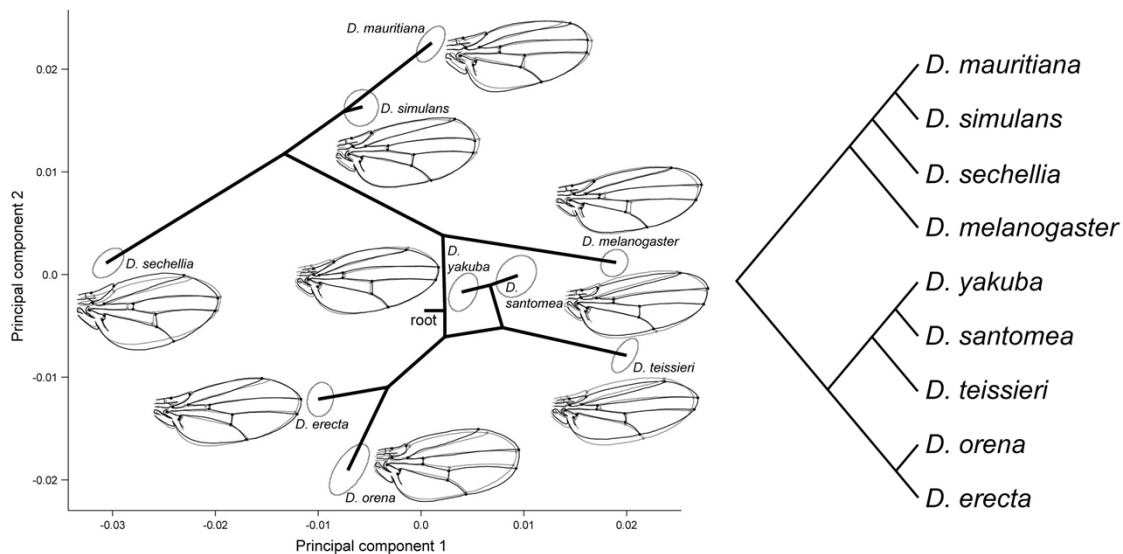


GEOMETRIC MORPHOMETRICS AND PHYLOGENY

September 4-7, 2012

Instructor: **Dr. Chris Klingenberg** (Senior Lecturer, University of Manchester, UK).



This course provides an overview of the interface between geometric morphometrics and phylogenetics. The main emphasis is on mapping shape data on existing phylogenies to reconstruct the evolutionary history of shape diversification, as well as comparative methods that take phylogeny into account.

Site: In the premises of Sabadell of the Institut Català de Paleontologia Miquel Crusafont, C/ de l'Escola Industrial, 23, 08201 Sabadell, Barcelona (Spain).

Timetable: From 9:30 to 13:30 and 15:00 to 17:00. Course length: 24 hours.

Fees: Reduced registration fee until June 30, 2012: 310 €. Full registration fee after June 30, 2012: 410 €. The price includes the course material, coffee breaks and lunches. Places are limited to 20 attendees.

Registration: Fulfil the online form at www.transmittingscience.org.

Organized by: Transmitting Science and the Institut Català de Paleontologia Miquel Crusafont.

